



## Life in the slums near high-rise buildings

VietNamNet Bridge – At the foot of luxury buildings in Saigon are slums, located on dark canals. The lives of local residents here are precarious and poor.



*Slums are the dark side of urbanization. HCM City has many slums with substandard houses stretching dozens of kilometers along two sides of canals, mainly in District 4, 7, 8 and Binh Thanh.*



*Some slums are located next to modern apartment and office buildings. These are slums on the Tau Hu canal, in District 4, located close to Khanh Hoi apartment buildings.*



*Slums are located along or on the banks of major canals in the city, including Tau Hu, Thi Nghe, Te, Doi, and Tham Luong, which are all heavily polluted.*



*The slum areas are built with rusty iron sheets and rotting boards.*



*The entrance to a slum on Tran Xuan Soan Road, District 7. The path to the slum is made from rotting wood pieces, which can fall down to the canal anytime.*





*The slums along Te and Doi canals, far behind the Bitexco building. Most of the waste is discharged directly into the water.*



*The slums on Thi Nghe canal, near Bui Huu Nghia Bridge, Binh Thanh District. Local people also discharge all waste directly into the canal.*



*Most of the houses are 3m wide, 15m long, with about 10m located on the water. However, the pillars are rotting and they can collapse at any time.*



*These houses are inhabited by poor families and working people.*

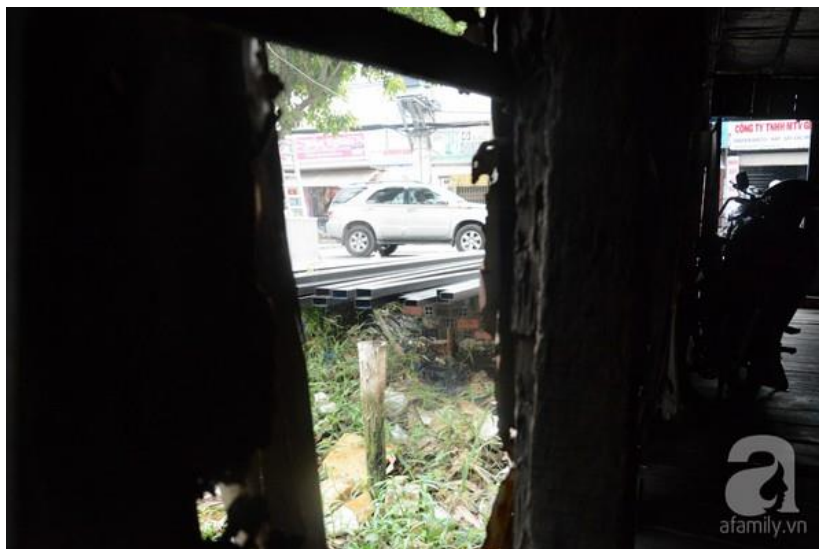


*Inside a slum.*



*Mrs. Nguyen Thi Hai, 57, said: "We always need clean water. The house always leaks and the roof blows off during storms or heavy rains."*





*"We just wish to get a cleaner place but it is only a dream," Mrs. Phuong said.*



*According to the HCM City Construction Department, there are over 17,000 slums in the city. It is difficult to relocate these houses because of lack of funding. Photo: Afamily*

**Thu Phuong**